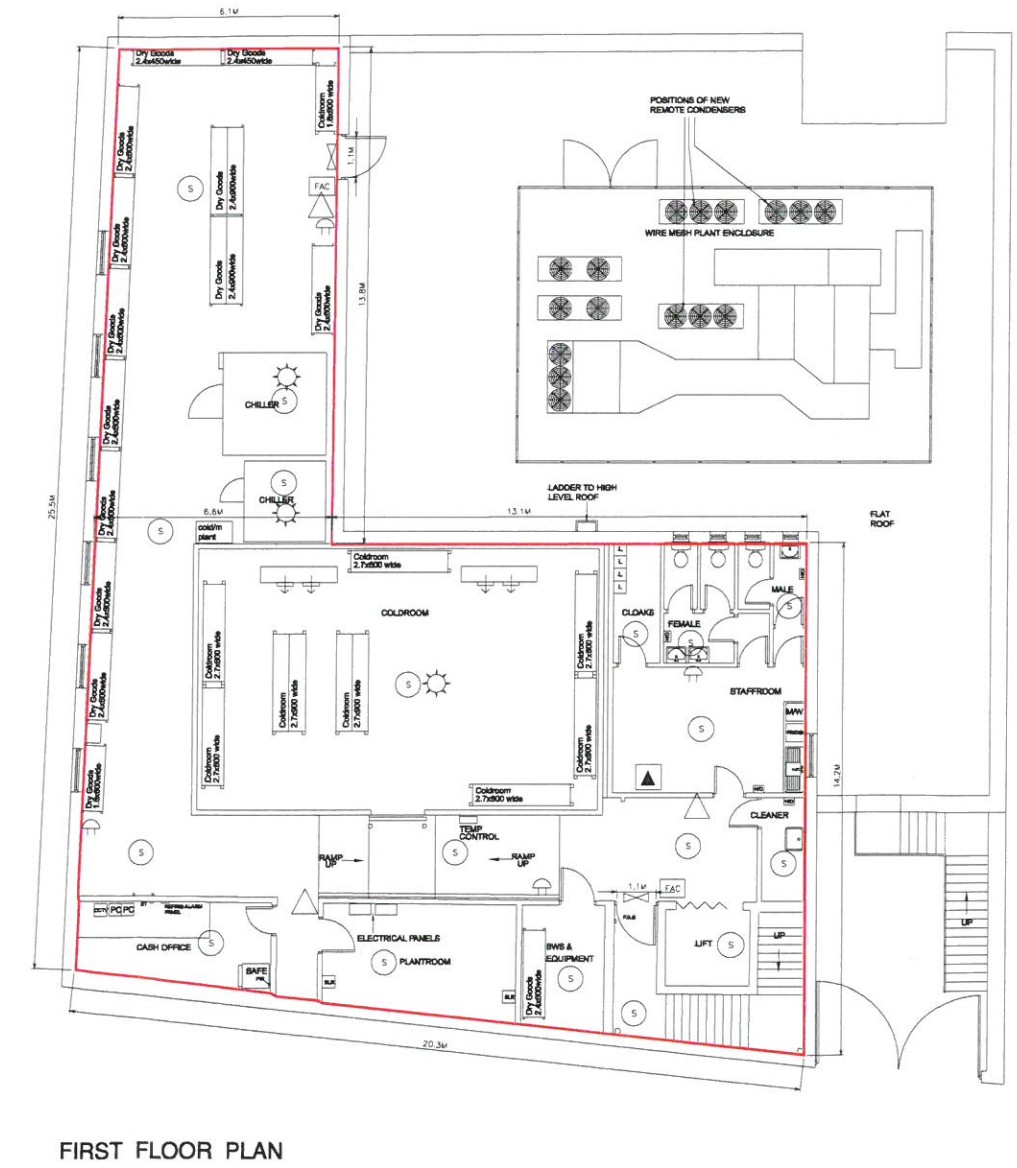
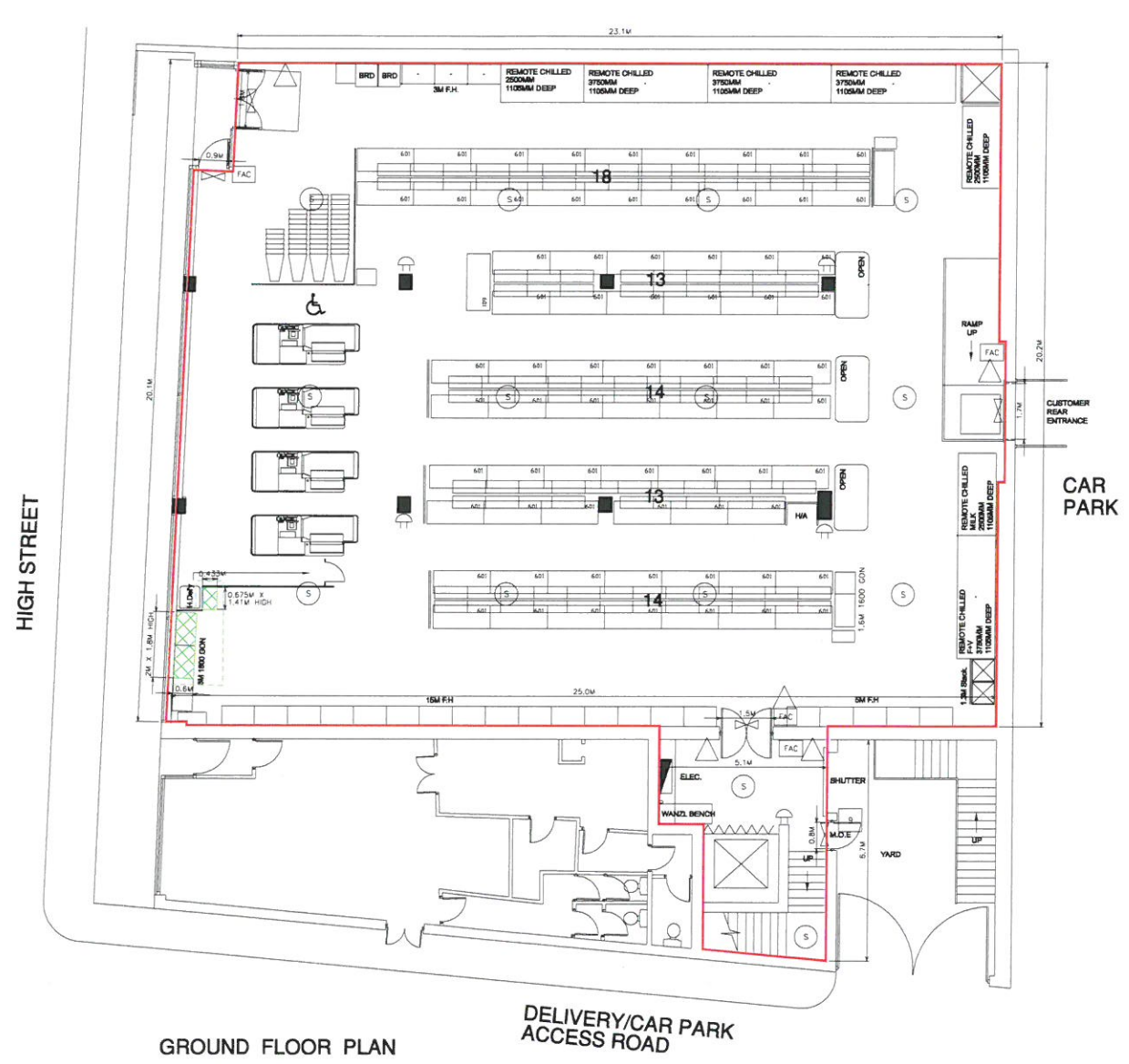


# GALASHIELS STORE 243

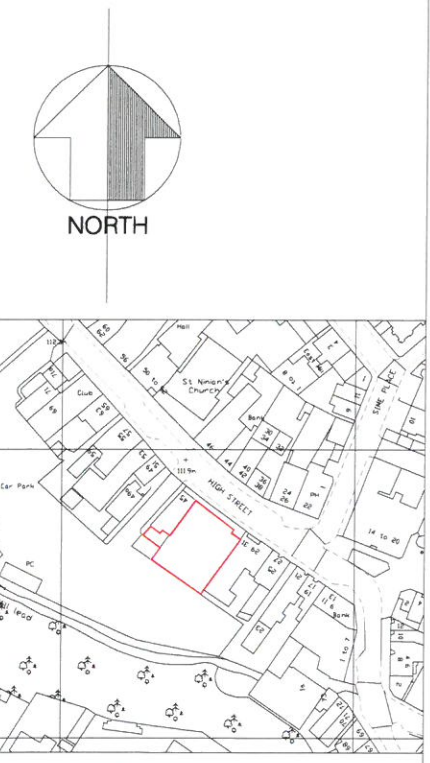
**LICENSING PLAN - FIRE KEY**

- FIRE EXTINGUISHER
- FIRE BLANKET
- EMERGENCY LIGHT BOX WITH GREEN MOVING PERSON SIGN
- FIRE ALARM CALL POINT
- FIRE ALARM CONTROL POINT
- FIRE ALARM SOUNDER
- SMOKE DETECTOR
- ALCOHOL DISPLAY AREA
- FIRE EXIT - KEEP CLEAR SIGN
- SUPPORTING PILLAR
- RED FLASHING LIGHT

NB - CHILDREN AND YOUNG PERSONS ARE PERMITTED TO ACCESS ALL PUBLIC AREAS OF THE PREMISES AT ALL TIMES.  
ALL ACTIVITIES THROUGHOUT THE STORE AS PER TERMS OF OPERATING PLAN.



ALCOHOL DISPLAY AREA = 4.55 SQ.M



DWG NO. <b>GALASHIELS-243-LIC01</b>	SHEET NO. <b>B</b>	REV. <b>B</b>
PROJECT <b>GALASHIELS</b>		STORE NO.
ADDRESS <b>33/43 HIGH STREET, GALASHIELS, BORDERS. TD1 1RY</b>		
TITLE <b>GROUND &amp; FIRST FLOOR PLANS &amp; LOCATION PLAN AS PROPOSED</b>		
DATE <b>28.09.18</b>	SCALE <b>1:100/1250 @ A1</b>	
DRAWN <b>RRDS/362</b>	CHECKED	

